

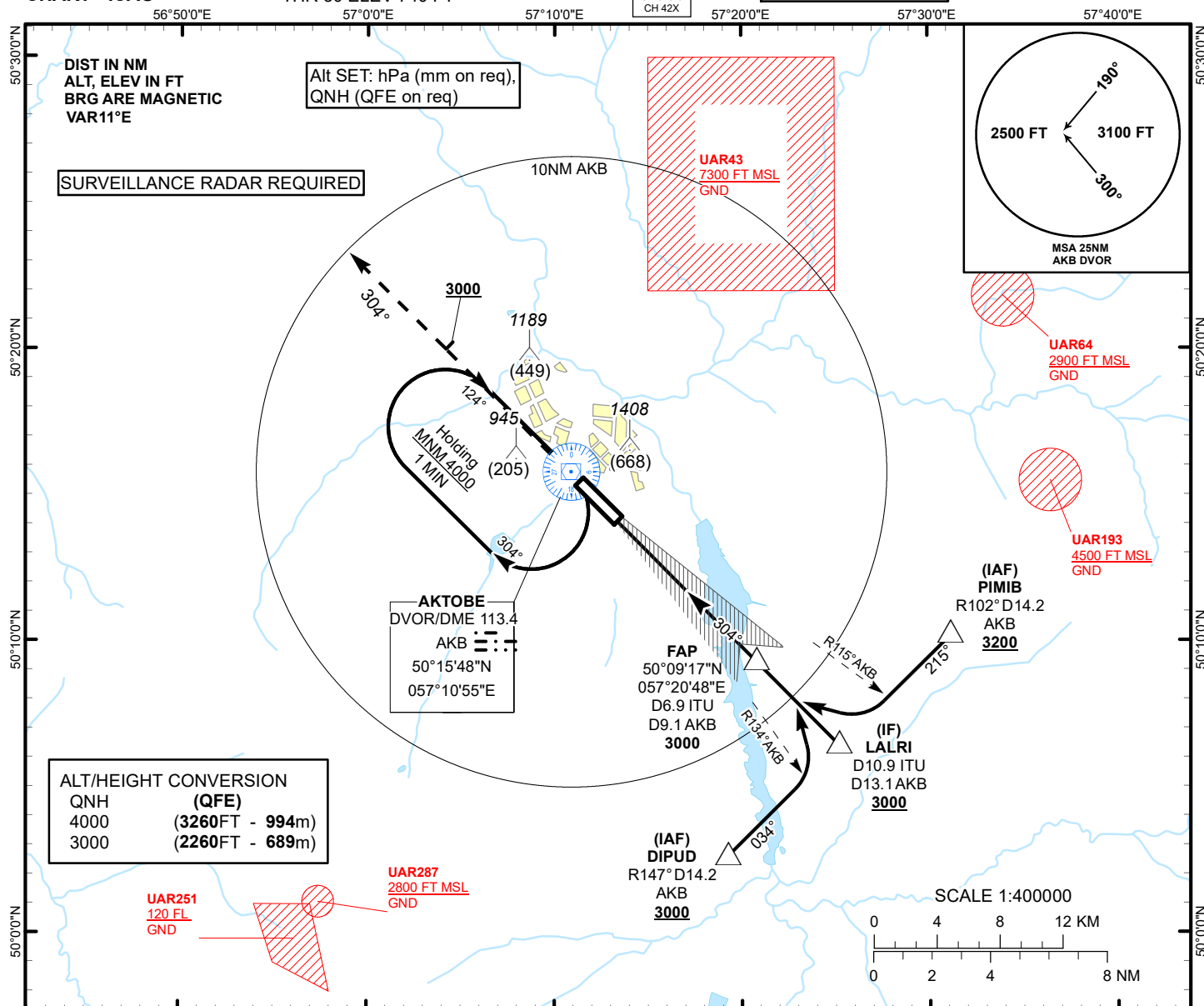
INSTRUMENT
APPROACH
CHART - ICAO

AERODROME ELEV 741 FT
HEIGHTS RELATED TO
THR 30 ELEV 740 FT

ILS
LLZ 110.5
ITU
GP 329.6
CH 42X

AKTOBE TOWER 120.90
AKTOBE ATIS (EN) 126.0
AKTOBE ATIS (RU) 127.80

AKTOBE
ILS/DME
RWY 30



MISSED APPROACH

Climb on track 304° to 3000.
After passing 2000 radar
vectoring will be provided.
RADIO FAILURE:
In case of RCF climb on track
304° to 2000 or above.
Outbound to D5.2 NM AKB,
turn LEFT to AKB. Climb to 4000,
and join to holding pattern.

TRANSITION ALT
10000

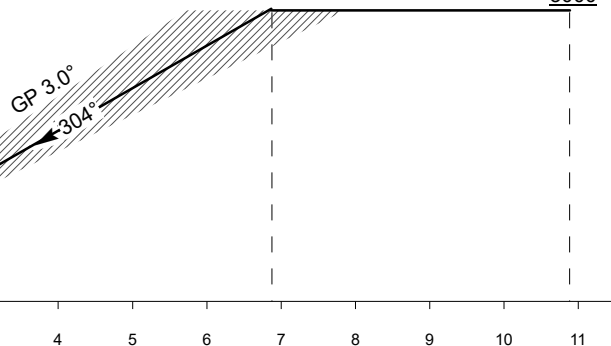
DVOR/DME
AKB

ILS RDH 54

ELEV 740
THR RWY 30

FAP
D6.9 ITU
D9.1 AKB
3000

IF LALRI
D10.9 ITU
D13.1 AKB
3000



CHANGE: MSA, IAF, ALT.

Aircraft Category		A	B	C	D	THR - DME ITU	6.9	6	5	4	3	2	1
Straight-in Approach OCA/H						DME AKB	9.1	8.2	7.2	6.2	5.2	4.2	3.2
	CAT I	952(213)	952(213)	952(213)	952(213)	ALTITUDE	3000	2700	2408	2081	1757	1434	1113
						HEIGHT	(2260)	(1960)	(1668)	(1341)	(1017)	(694)	(373)
DME ITU ZERO RANGED TO THR RWY 30													
Aerodrome Operating Minima DH ft x RVR(CMV)	CAT I					GS	Kt	80	100	120	140	160	180
						Rate of descent	ft/min	420	530	630	740	840	950

AKTOBE (UATT)
ILS/DME RWY30

AERONAUTICAL DATA TABULATION

ILS approach to RWY30 from AKB DVOR/DME, DIPUD, PIMIB, LALRI	
Fix/point	Coordinates
AKB DVOR/DME	50° 15' 48.3"N 057° 10' 54.8"E
DIPUD R147°, D14.2 AKB (IAF)	50° 02' 38.2"N 057° 19' 14.0"E
PIMIB R102°, D14.2 AKB (IAF)	50° 10' 13.4"N 057° 31' 10.1"E
LALRI D10.9 ITU, D13.1 AKB (IF)	50° 06' 26.0"N 057° 25' 11.6"E
D6.9 ITU, D9.1 AKB (FAP)	50° 09' 17.1"N 057° 20' 48.2"E
THR RWY30	50° 14' 09.59"N 057° 13' 16.51"E
ITU LLZ	50° 15' 44.7"N 057° 10' 49.0"E